

**Appendix 2 - Photographs taken at Queen's Hills during the survey**

**SITE PHOTOS**



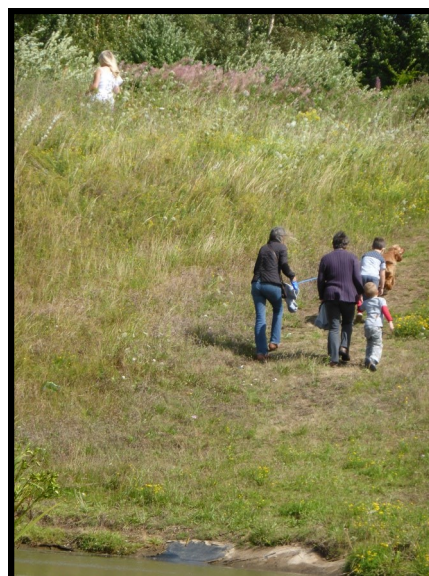
**1. Looking East across Area 2 - May 19<sup>th</sup>**



**2. Looking South-east across Area 2 and Area 6 - August 18<sup>th</sup>**



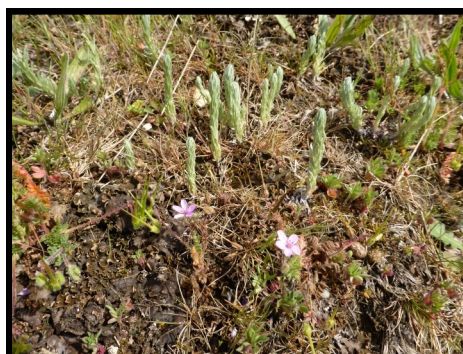
**3. Looking South-west across Area 2 and Area 6 - June 16<sup>th</sup>**



**4. Visitors enjoying the site - August 11<sup>th</sup>**



**5. Short turf and bare ground of Area 1 - May 23<sup>rd</sup>**



**6. Typical vegetation of Area 1 showing cudweed and stork's-bill - May 23<sup>rd</sup>**



**7. Looking South across the valley from the top of Area 4 - August 11<sup>th</sup>**



**8. Tree planting in Area 4 - May 19<sup>th</sup>**



**9. Looking South across the balancing pond (Area 7) - May 23<sup>rd</sup>**



**10. Looking South across the balancing pond (Area 7) - August 11<sup>th</sup>**



**11. Looking East across Area 8 to Area 9 - September 5<sup>th</sup>**



**12. Looking South-east across Area 11 to Costessey Hall - July 14<sup>th</sup>**



**13. Looking across Area 11 to the golf course and Costessey Hall - July 14<sup>th</sup>**



**14. Looking West through Area 12 - July 14<sup>th</sup>**



**15. Area 13, showing the dead oak tree that held a pair of breeding stock dove - September 5<sup>th</sup>**



**16. One of the open glades within Area 15 - August 11<sup>th</sup>**



**17. The river channel (Area 16) west of the road, showing branched and unbranched bur-reed and yellow water-lily- August 18<sup>th</sup>**



**18. The 'butterfly area' on the north side of Queen's Hills - August 18<sup>th</sup>**

## 'BEE BANKS'



19. Excellent example of a 'bee bank' north of Queen's Hills - August 18<sup>th</sup>



20 & 21. 'Bee bank' showing solitary bee and wasp nest holes - August 18<sup>th</sup>

## EA FISH SURVEY



22. Environment Agency staff carrying out electro-fishing survey - June 19<sup>th</sup>



23. Adult white-clawed crayfish caught during the fish survey - June 19<sup>th</sup>



24. one of the many brown trout caught during the fish survey - June 19<sup>th</sup>

## PLANTS



25. Carthusian pink - July 4<sup>th</sup>



26. Carline thistle - August 11<sup>th</sup>

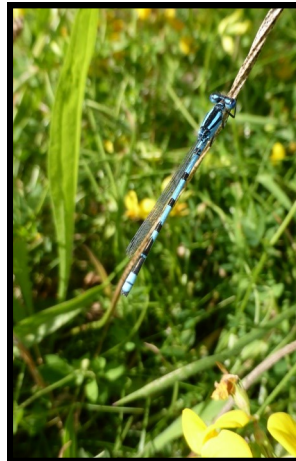


27. Common spotted orchid -  
June 19<sup>th</sup>

## DAMSELFLIES



28. Ploughman's spikenard -  
August 11<sup>th</sup>



29. Common blue  
damselfly - August 11<sup>th</sup>

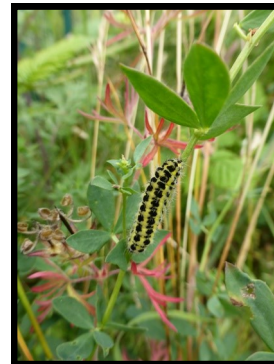


30. Small red-eyed damselfly -  
August 11<sup>th</sup>

## BUTTERFLIES & MOTHS



31. Six-spot burnet moth on field  
scabious - June 16<sup>th</sup>



32. Six-spot burnet  
caterpillar on bird's-foot  
trefoil - June 19<sup>th</sup>



33. Clouded yellow - August 11<sup>th</sup>



34. Large skipper - June 16<sup>th</sup>



35. Peacock caterpillars on nettle - June 16<sup>th</sup>



36. *Nemophora degeerella* (a longhorn moth) - May 23<sup>rd</sup>



37. Small tortoiseshell on bud-  
dleja - August 11<sup>th</sup>

#### LONGHORN BEETLE



38. *Rutpela maculata* (black-and-yellow longhorn  
beetle) - July 14<sup>th</sup>

**GRASSHOPPERS & CRICKETS**



**39. Common green grasshopper in Area 12 - August 18<sup>th</sup>**



**40. Field grasshopper in Area 2 - August 18<sup>th</sup>**



**41. Lesser marsh grasshopper in Area 8 - August 18<sup>th</sup>**



**42. Common groundhopper in Area 12 - August 11<sup>th</sup>**



**43. Long-winged conehead in Area 8 - August 18<sup>th</sup>**



**44. Roesel's bush-cricket in Area 11 - August 18<sup>th</sup>**